

BODRUM

THE EMERALD AEGEAN WATERS: WHERE SWISS HOSPITALITY AND TURKISH FLAIR MEET.

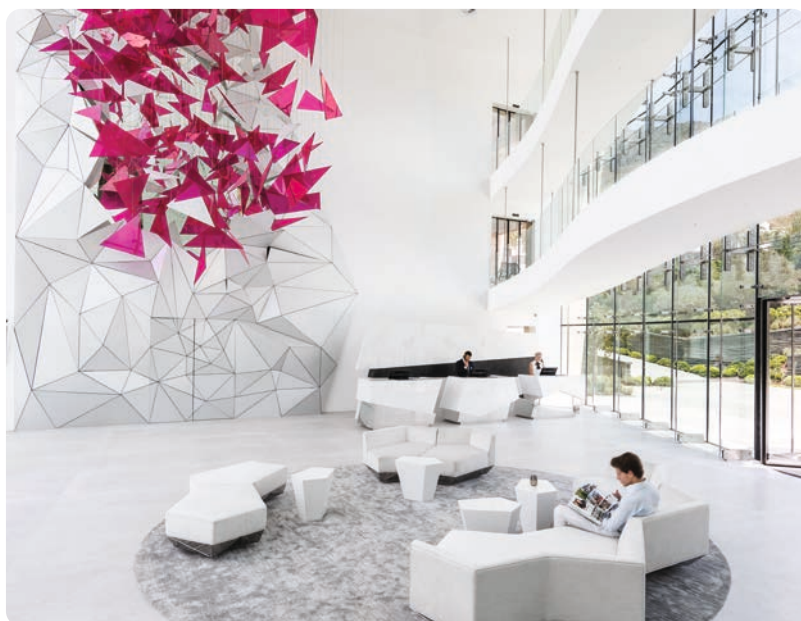
Swissôtel Resort Bodrum Beach
Turgutreis Mah. Gazi Mustafa Kemal Bulvarı No:42 48400 Bodrum/Mugla/Turkey
Tel: +90 252 311 33 33 Fax: +90 252 311 33 34
bodrum@swissotel.com www.swissotel.com/bodrum

swissôtel **RESORT**
BODRUM BEACH

LOCATION

DIRECTLY ON THE WATERFRONT IN TURGUTREIS

Resort Bodrum Beach. Approximately 22 kilometres from the centre of Bodrum, our two-storey hotel comprises 70 rooms and suites, each at least 40m² in size. 72 serviced residences ranging from 82m² to 385 m² also complement the seaside property. For entertainment, our bars and restaurants offer ambiance as local as the produce used in their dishes. With indoor and outdoor pools and Pürovel Spa & Sport facilities, you'll have sport and leisure opportunities as inspiring as the waterfront views.



GUEST ROOMS

70 STYLISH SPACES

Our 70 spacious guest rooms and suites feature Aegean flair and contemporary Alpine style. Whether sea view, garden view, or corner suite, marble bathrooms meet modern design to make you stop, smile, and stay awhile. From comfort-engineered beds to technological conveniences, you'll have everything you've come to expect from a Swissôtel stay. Your modern, Wi-Fi friendly and tastefully decorated room offers the best of Turkish hospitality and Swiss service.

RESTAURANTS & BARS

AMBIENCE. IT'S ON THE MENU.

Four restaurants, three bars, and all-day service mean deliciousness has a new schedule: now. Whether you want to dine by the pool at Café Swiss, by the beach at our Beach Bar & Restaurant or high in the clouds at Yûhi Restaurant and Brezza Restaurant the ingredients for pure delight are on every menu. And if you can't decide based on atmosphere, certain culinary creations might call to you instead Café Swiss serves healthy breakfasts and lunches prepared in an open kitchen whilst Yûhi Restaurant elevates Asian gourmet. Brezza Restaurant brings Mediterranean breeze to Aegean coast. All dining options offer the opportunity to say, Afiyet olsun. That's Turkish for "enjoy your meal."



PÜROVEL SPA VE SPORT

ALPINE VITALITY IN. REALITY OUT.

The Pürovel philosophy is derived from the origin of wellbeing. It uses nature's resources, such as stone, wood, water, flora, and pure, invigorating Alpine air to reflect the changing seasons of the Swiss mountains. Experience our Signature Pürovel Spa treatments and in-room bath products and you'll benefit from the use of organically produced Swiss essential oils. These work together with our modern sports facilities, having both been created to invigorate and vitalise in rhythm with the seasons.



WEDDINGS & EVENTS

FROM HERETO HAPPILY EVERAFTER

Swissôtel Resort Bodrum Beach offers unique venues that can provide catering service for up to 300 people. Whether you prefer a romantic dinner by the pool or a fairytale atop of the clouds either a party tent next to the Aegean waters, there will be plenty of space to create a once in a lifetime event.



FACILITIES & SERVICES

WEDDINGS SWISSÔTEL RESORT BODRUM BEACH HIGHLIGHTS

- 5-star hotel
- 70 stylish and contemporary guest rooms and suites
- 45 minute drive from Bodrum Milas Airport (57 km away)
- Two in-house restaurants and two bars
- Professional meeting and event facilities
- Wireless Internet • Pürovel Spa & Sport
- Private beach
- Indoor & outdoor pool
- Sauna, steam room, hammam, & Jacuzzi
- Relaxation areas
- Adventure shower
- Ice fountain
- Fitness, cardio, & weight training
- 24-hour in-room dining
- On-site parking
- Valet parking
- Laundry service
- Transfer service





CAPACITY CHART

WEDDINGS & EVENTS	AREA M2	L	W	H	THEATRE STYLE	BOARD ROOM	CLASS ROOM	U-SHAPE DESING	ROUND TABLE	COCKTAILS	EXISTING
Beach Deck	1275	635	22	-	-	-	-	-	300	500	30
Yûhi Roof Restaurant	280	23	12	-	-	-	-	-	120	200	64
Yûhi Roof Lounge	221	13	15/5	-	-	-	-	-	-	50	26
Yûhi Roof Bar	158	95	15	-	-	-	-	-	150	200	40
Pool Side	643	-	-	-	-	-	-	-	15	200	40
Cafe Swiss	260	27	9	26	-	-	-	-	68	150	56

