



# WELCOME TO IZMIR

SWISSÔTEL BÜYÜK EFES, IZMIR

swissôtel  
Hotels & Resorts

# EXECUTIVE SUMMARY



01

**HOTEL  
DESCRIPTION**



02

**ROOM  
DESCRIPTION**



03

**FOOD &  
BEVERAGE**



04

**CONVENTION  
CENTRE**



05

**GARDENS &  
OUTDOOR AREAS**



06

**OUTSIDE  
CATERING**



07

**PÜROVEL  
SPA & SPORT**



08

**ART  
MASTERPIECES**



09

**AWARDS &  
CERTIFICATES**





01

# Hotel Description



- Set in 12.000 m<sup>2</sup> landscaped gardens and the heart of the beautiful city Izmir, Swissôtel Büyük Efes welcomes its guests with a brand new, contemporary design, warm Turkish hospitality and also exclusive amenities and services that cater to the needs of the discerning travellers and tourists.
- 402 elegantly appointed guest rooms with balcony including 55 luxury suites featuring state-of-the-art technology. Guests can choose between non-smoking, smoking and handicapped rooms. The Swiss Executive floors and Swiss Executive Club Lounge provide additional luxury and exclusivity.



- The hotel has a valuable reputation and heritage of “Büyük Efes Hotel” (First 5 star hotel of Aegean region). Special art masterpieces from the legacy of “Büyük Efes Hotel” and an inspiring art collection from Fernando Botero to Turkey’s leading exponents of modern art throughout the hotel.
- Fascinating restaurants & bar at roof overlooking Izmir bay offers delicious and exclusive tastes. Guests are presented a selection of traditional Turkish and contemporary cuisine in a variety by Café Swiss, Equinox, Aquarium Mezzes&Grill and Sky Bar.





- Pürovel Spa & Sport set in over 5.500 m<sup>2</sup> with 19 treatment rooms, an indoor pool, a fish formed outdoor pool is surrounded with lush greenery and wet & fitness areas.
- Büyük Efes Convention center provide high tech and fully equipped services for all type of events. Under the convention center, indoor parking is offered for the hotel guests.

A large circular image on the left side of the slide shows a lush green park with several tall palm trees in the foreground. In the middle ground, there is a statue of a person on a horse, standing on a pedestal. Beyond the park, the blue Aegean Sea is visible, and in the far distance, a city skyline with various buildings can be seen under a clear sky. A yellow circle is overlaid on the top right of the image, containing the text 'IN THE HEART OF THE CITY'.

IN THE  
HEART OF  
THE CITY

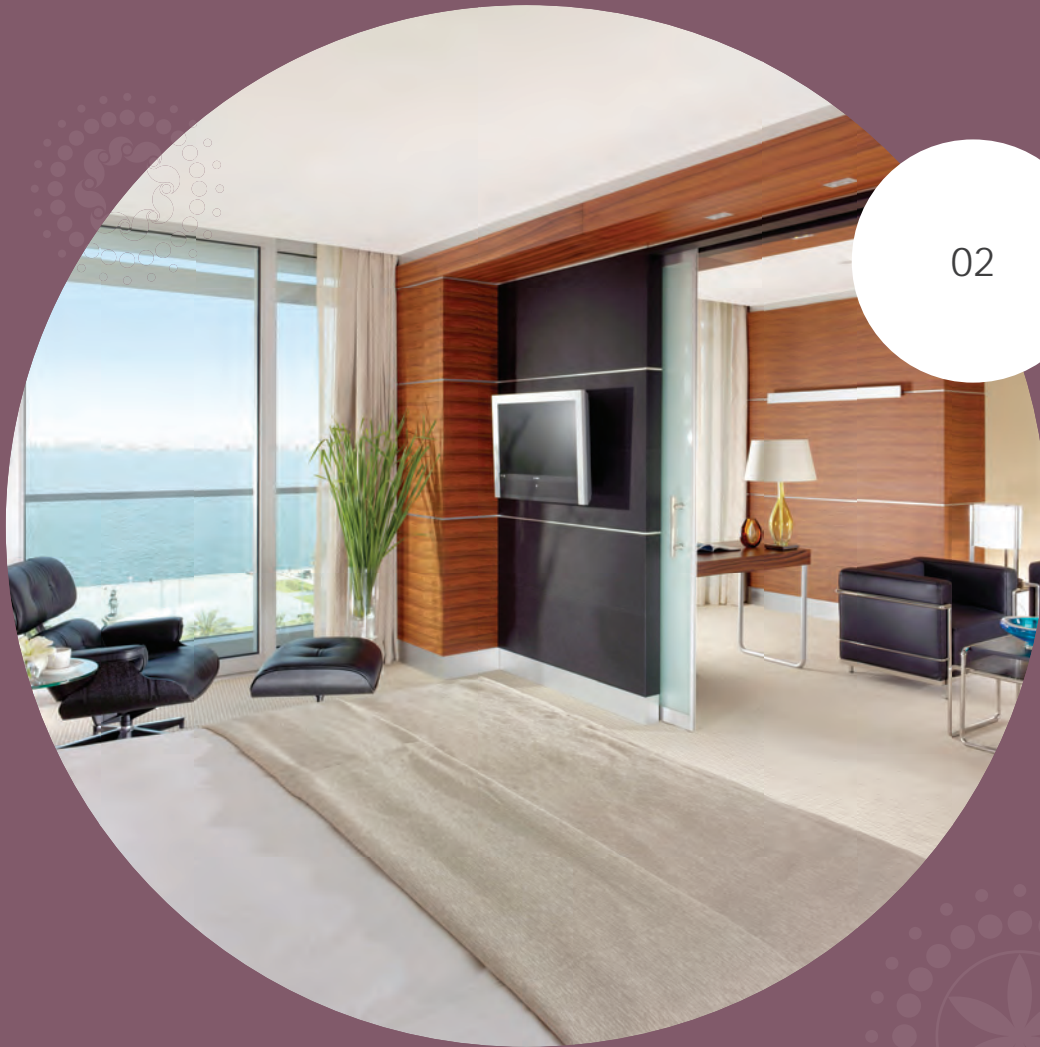
## Location

- Prominently located in the heart of the city's commercial hub.
- Overlooking the Kordon on the Aegean Sea.
- Walking distance from the Commercial Centre, Kemeraltı Old Bazaar which features an ideal environment to purchase authentic Turkish products, the main Izmir Cultural Park and the Archaeological Museum.
- Less than 15 km to Izmir Adnan Menderes Airport.
- Easy access to the bus and metro networks.



02

# Room Description







## SWISS ADVANTAGE ROOMS

Swiss Advantage rooms, compromising comfort and design, provide top-of-the-line technology and infrastructure for today's business travelers. Over 27 square meters in size with a balcony, views of the greenly garden and city is featured sea and the garden.

It offers, bathtub and shower combination in the bathroom, high-speed Internet and wireless access, ISDN, data ports at desk level and voice mail.

# EXECUTIVE ROOMS

Generously appointed Swiss Executive rooms provide a complete line of business facilities available in Swiss Advantage rooms with sea, garden and city views options.

In addition, Swiss Executive rooms offer a wide selection of unique services and amenities, including access to the Swiss Executive Club Lounge.





## FAMILY ROOMS

Offering the ultimate in style and comfort, the suites provide on over 58 square meters in size with a balcony with garden views, spacious living areas and a full line of luxury amenities and services.

Features range from bathtub & shower combination and whirlpool bath in the bathroom, cordless telephones to Hi-Fi sound systems including LCD TVs and DVD players. Natural fabrics and materials of the highest quality further enhance the sophisticated design and urban elegance.



# BUSINESS SUITES

Offering the ultimate in style and comfort, the suites provide on over 58 square meters in size with a balcony and sea or garden views options, spacious living areas and a full line of luxury amenities and services.

Features range from bathtub & shower combination and whirlpool bath in the bathroom, cordless telephones to Hi-Fi sound systems including LCD TVs and DVD players. Natural fabrics and materials of the highest quality further enhance the sophisticated design and urban elegance. Other amenities include, access to the Swiss Executive Club Lounge.





## EXECUTIVE SUITES

Offering the ultimate in style and comfort, the suites provide on over 85 square meters in size with a balcony and sea view, spacious living areas and a full line of luxury amenities and services.

Features range from bathtub & shower combination and whirlpool bath in the bathroom, cordless telephones to Hi-Fi sound systems including LCD TVs and DVD players. Natural fabrics and materials of the highest quality further enhance the sophisticated design and urban elegance. Other amenities include, access to the Swiss Executive Club Lounge.



## EXECUTIVE CLUB LOUNGE

Start your day refreshed and inspired in Swissotel Izmir's executive lounge. Reserved for the exclusive access of guests of our suites and executive rooms, the lounge is a contemporary space where you can enjoy a breakfast buffet, read international newspapers and enjoy sweeping views of the city and ocean. Work collaboratively over WiFi or entertain business associates with the all-day refreshments available. Round off your day or give your night a boost with an evening cocktail before exploring all this exciting city has to offer. Or simply relax with a glass of Turkish tea and enjoy the feel of hand-picked fabrics in our stylishly-upholstered sofas.



# PRESIDENTIAL SUITE

Over 170 square meters in size, offers the highest level of comfort and luxury with breath taking views of the sea and the garden.

Featuring a five square meter balcony, our premium accommodation comprises a king size bed room with en-suite bathroom that has a separate rain shower in addition to the bathtub with Jacuzzi, a spacious living room with a dining area, a twin bedroom with separate bathroom and a fully equipped separate kitchen.





03

## Food & Beverage

# RESTAURANTS



## CAFÉ SWISS

Café Swiss offers Turkish and Swiss Cuisine. The restaurant is open for breakfast and lunch featuring live action cooking stations in a stunning large show kitchen.



## AQUARIUM MEZZES & GRILL

Aquarium Mezzes & Grill welcomes its guests with delectable appetizers prepared with the utmost care and delicious grilled food options. Unforgettable evenings await guests on Wednesdays, Fridays and Sundays, with live music.



## EQUINOX

Equinox is an elegant restaurant where guests can enjoy modern style preparations of meat and fish while being dazzled with the spectacular view of Izmir Bay.



## EQUINOX PDR

Equinox PDR, which can be divided in two sections, offers its guests an elegant and private home away from home accompanied by the stunning view of Izmir Bay. Enjoy your special events up to 60 guests with delicious tastes.



# BAR & LOUNGES



## SKY BAR

Situated adjacent to Equinox, the Sky Bar offers stylish, fabulously presented cocktails in a club-like atmosphere. Live DJ performances on Wednesdays, Fridays and Saturdays.



## POOL BAR

Situated on the outdoor pool, Pool Bar offers its guests savory flavors and refreshing drinks in the summer season.



## LOBBY LOUNGE

The Lobby Lounge is an elegant and comfortable lounge that offers a menu consisting of wide selection of food & beverages. Every afternoon, high tea pleasure awaits you at Lobby Lounge with rich seasonal tastes.



## SWISS GOURMET

Swiss Gourmet welcomes its guests with the sweetest, tastiest and the most innocent of indulgences in a wide selection including hand made chocolate and special cakes at Lobby Lounge.

04

# Convention Centre





# CONVENTION CENTRE

The 7.316 m<sup>2</sup> Büyük Efes Convention Center, located within Swissôtel Büyük Efes, Izmir offers the ideal venue for any kind of meetings, incentives, conferences and events and is unparalleled in its use of technologically advanced facilities and equipment. Facilities include a total of 19 meeting and conference rooms after partition, including a multipurpose exhibition hall and a grand ballroom.

- 9 Meeting Rooms,
- 2 Grand Ballrooms (Grand Efes 1, Grand Efes 2)
- 4 Boardrooms,
- Smyrna Multi-Purpose Hall containing 2 sections
- 1,457 sqm of Exhibition Space (2 sections)



# MULTIFUNCTIONAL HALL & BALLROOMS



## SYMRNA (1+2) MULTIFUNCTIONAL HALL

Area (ft <sup>2</sup> / m <sup>2</sup> )	: 7964 / 740
L x W x H	: 38 x 36 x 6.5
Theatre Style	: 1000
Boardroom	: 100
Classroom	: 400
U-Shape	: 100
Seating	: 456
Cocktail	: 610
Cocktail Prolonge	: 470



## GRAND EFES 1 BALLROOM

Area (ft <sup>2</sup> / m <sup>2</sup> )	: 9579 / 890
L x W x H	: 30 x 32 x 4.4
Theatre Style	: 750
Boardroom	: 60
Classroom	: 300
U-Shape	: 80
Seating	: 600
Cocktail	: 750
Cocktail Prolonge	: 650



## GRAND EFES 2 BALLROOM

Area (ft <sup>2</sup> / m <sup>2</sup> )	: 3982 / 370
L x W x H	: 22 x 12 x 4
Theatre Style	: 250
Boardroom	: 60
Classroom	: 100
U-Shape	: 50
Seating	: 216
Cocktail	: 250
Cocktail Prolonge	: 200

# BOARDROOMS



## PETEK BOARDROOM

Area (ft<sup>2</sup> / m<sup>2</sup>) : 968 / 90  
L x W x H : 13 x 6 x 2.6  
Boardroom : 25 guests



## BAYRAKLI BOARDROOM

Area (ft<sup>2</sup> / m<sup>2</sup>) : 667 / 62  
L x W x H : 9 x 5 x 2.6  
Boardroom : 16 guests



## CANKAYA BOARDROOM

Area (ft<sup>2</sup> / m<sup>2</sup>) : 398 / 37  
L x W x H : 6 x 5 x 2.6  
Boardroom : 10 guests



## ALSANCAK BOARDROOM

Area (ft<sup>2</sup> / m<sup>2</sup>) : 775 / 72  
L x W x H : 6 x 11 x 2.3  
Boardroom : 11 guests

# MEETING ROOMS



## DIDIM MEETING ROOM

Area (ft <sup>2</sup> / m <sup>2</sup> )	: 1625 / 151
L x W x H	: 13,75 x 7,48 x 2,6
Theatre Style	: 120 guests
Boardroom	: 38 guests
Classroom	: 76 guests
U-Shape	: 32 guests
Seating	: 90 guests
Cocktail	: 120 guests
Cocktail Prolonge	: 100 guests



## BERGAMA (2+3) MEETING ROOM

Area (ft <sup>2</sup> / m <sup>2</sup> )	: 806 / 75
L x W x H	: 11 x 5 x 2,65
Theatre Style	: 40 guests
Boardroom	: 20 guests
Classroom	: 24 guests
U-Shape	: 16 guests
Seating	: 32 guests
Cocktail	: 30 guests
Cocktail Prolonge	: 20 guests



## KARSIYAKA (1+2+3) MEETING ROOM

Area (ft <sup>2</sup> / m <sup>2</sup> )	: 2474 / 227
L x W x H	: 36 x 20 x 2,40
Theatre Style	: 60 guests
Boardroom	: 18 guests
Classroom	: 30 guests
U-Shape	: 18 guests
Seating	: 60 guests
Cocktail	: 170 guests
Cocktail Prolonge	: 120 guests



# MEETING ROOMS & EXHIBITION HALL



## KONAK (1+2) MEETING ROOM

Area (ft <sup>2</sup> / m <sup>2</sup> )	: 1140 / 106
L x W x H	: 15 x 12 x 2,66
Theatre Style	: 48 guests
Boardroom	: 32 guests
Classroom	: 24 guests
U-Shape	: 24 guests
Seating	: 32 guests
Cocktail	: 40 guests
Cocktail Prolonge	: 30 guests



## KORDON EXHIBITION HALL 1 / Basement

Area (ft <sup>2</sup> / m <sup>2</sup> )	: 11506 / 1069
L x W x H	: 34 x 35 x 2,3
Theatre Style	: 200 guests
Boardroom	: 60 guests
Classroom	: 100 guests
U-Shape	: 35 guests
Seating	: 200 guests
Cocktail	: 850 guests
Cocktail Prolonge	: 750 guests

## KORDON EXHIBITION HALL 2 / Basement

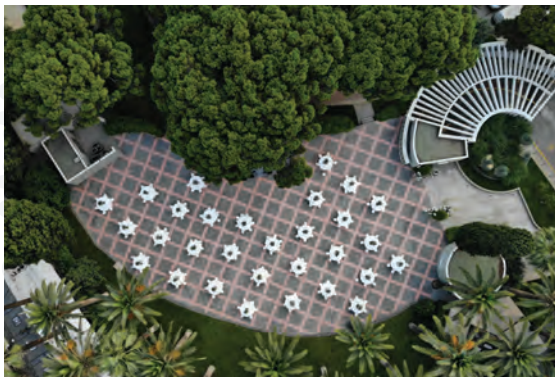
Area (ft <sup>2</sup> / m <sup>2</sup> )	: 4176 / 388
L x W x H	: 16 x 22 x 2,3
Theatre Style	: 180 guests
Boardroom	: 25 guests
Classroom	: 30 guests
U-Shape	: 25 guests
Seating	: 180 guests
Cocktail	: 350 guests
Cocktail Prolonge	: 250 guests

A circular inset image showing a lush green golf course. A light-colored, winding path leads through the grass. Several trees, including tall pines and smaller deciduous trees, are scattered throughout the landscape. In the background, a building is partially visible through the foliage. The scene is well-lit, suggesting a sunny day.

05

# Gardens & Outdoor Areas

# GARDENS & OUTDOOR AREAS



## PALM GARDEN

Grass Area (m<sup>2</sup>) : 1000  
Seating : 350 guests  
Cocktail : 500 guests  
Cocktail Prolonge : 450 guests

Stone Floor Area (m<sup>2</sup>) : 750  
Seating : 650 guests  
Cocktail : 900 guests  
Cocktail Prolonge : 850 guests



## SECRET GARDEN

Area (m<sup>2</sup>) : 743  
Seating : 250 guests  
Cocktail : 500 guests  
Cocktail Prolonge : 400 guests



## OVAL GARDEN

Area (m<sup>2</sup>) : 708  
Seating : 380 guests  
Cocktail : 600 guests  
Cocktail Prolonge : 450 guests





06

# Outside Catering



Swissôtel Catering is the choice for those who want to have an exclusive organization for their special days. Unique tastes and stylish presentations come together in Swissôtel Catering.

Discover the secret of unforgettable events, for 5 up to 2000 people, with various price options.

## OUTSIDE CATERING IN EPHESUS & URLA







07

# Pürovel Spa & Sport



## PÜROVEL SPA & SPORT

- The Pürovel philosophy is derived from the origin of wellbeing and use of nature's resources to invigorate you with the help of alpine air and the changing seasons of the Swiss mountains.
- Over 5,500m<sup>2</sup>, Pürovel Spa & Sport provides the Alpine inspired solution to healthy living within a stylish and contemporary environment in Izmir.





- Pürovel Spa treatments, using essential oils organically produced in Switzerland, work in symmetry with the well-designed and modern sports training facilities, having both been created to invigorate and vitalise in rhythm with the seasons.
- Pürovel Spa & Sport offers 14 treatment rooms, a Presidential Wellness Suite for couple therapies, a hydrotherapy room, solarium, steam bath, a relaxation lounge, pilates studios, Turkish Hammam, sauna, jacuzzi, indoor and outdoor swimming pools, group fitness classes, personal training and a tennis court.



# INDOOR & OUTDOOR POOLS



INDOOR POOL



OUTDOOR POOL

# SPA & FITNESS



TURKISH BATH

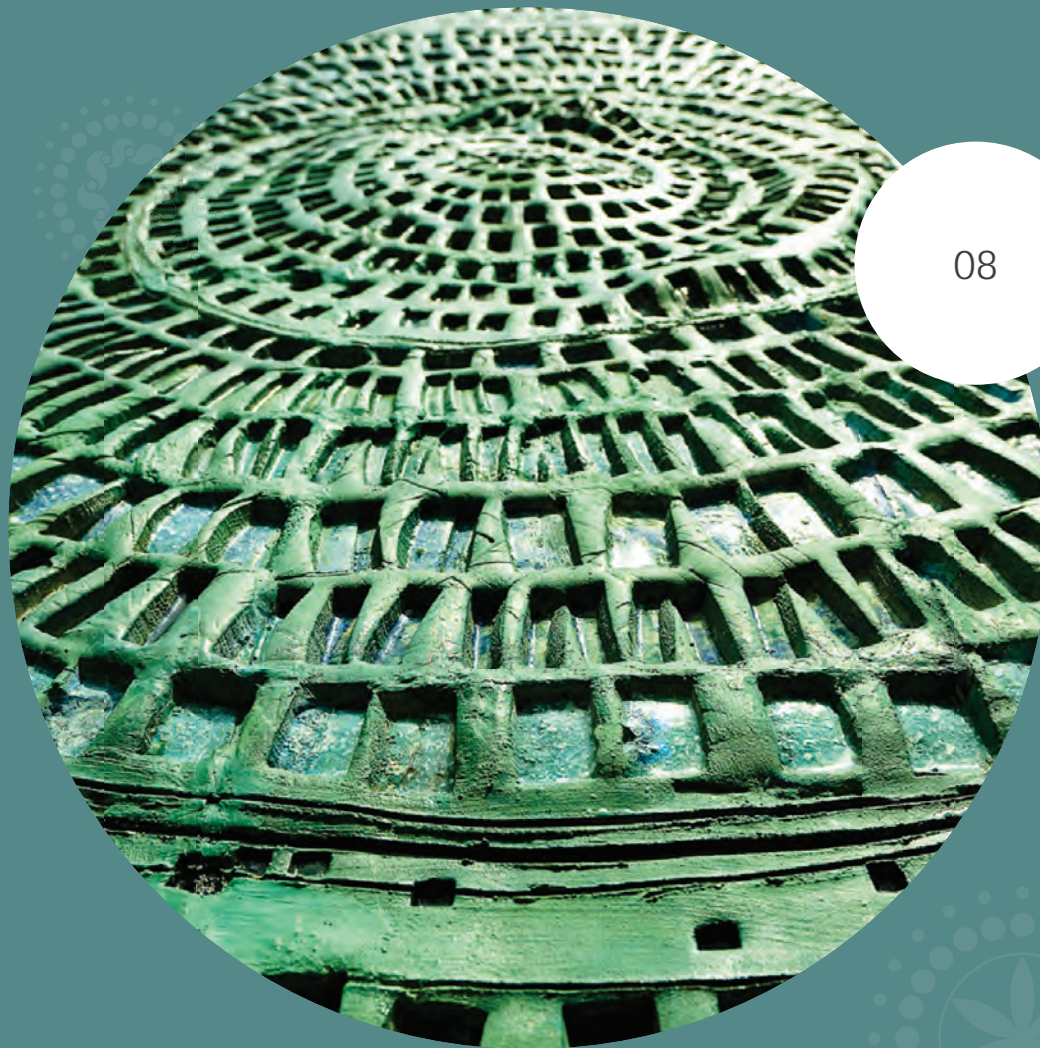


PRESIDENTIAL WELLNESS SUITE



FITNESS CENTER





08

# Art Masterpieces





## A DELUXE HOTEL AS A GALLERY OF MODERN ART

Opened in 1964 under the name Büyük Efes Hotel as one of the first five-star hotels in Turkey and the first-five star hotel in Turkey's Aegean Region, the hotel changed its name to Swissôtel Büyük Efes in 2008 and grew stronger.

The legacy of art and history is ever since an inseparable whole for the hotel.

Guests of Swissôtel Büyük Efes, Izmir, are invited to enjoy a close-up insight into the world of contemporary art: the entire hotel resembles a modern art gallery, with works including sculptures by the Colombian painter and sculptor Fernando Botero and paintings by Turkey's leading exponent of modern art on display throughout the complex.





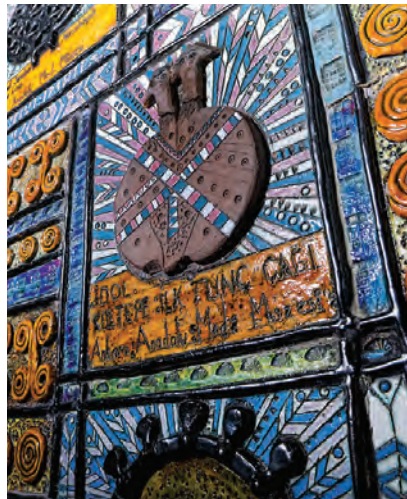
# ART MASTERPIECES



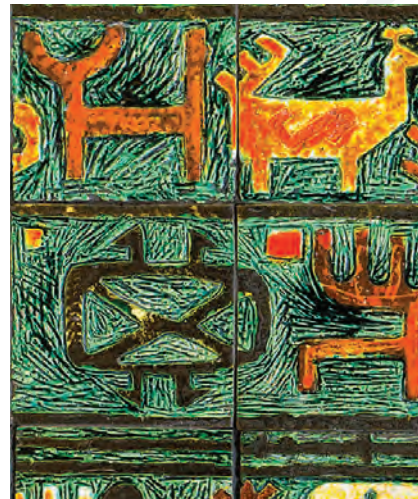
**ŞADI ÇALIK**  
REPLICA OF ARTEMIS



**ATILGA GALATALI**  
CERAMIC PANEL



**JALE YILMABAŞAR**  
ANATOLIAN  
CIVILIZATIONS SERIES



**ERDOĞAN ERSEN**  
MOSAIC PANEL



# ART MASTERPIECES



**RABARAMA**  
GUILLOTINE



**ANTONY GORMLEY**  
TIP



**LORENZO QUINN**  
LOVE



**VAROL TOPAÇ**  
BİR-LİK

09



## Awards & Certificates

# AWARDS & CERTIFICATES

- Bureau Veritas 2020 / "Safe Tourism Certificate"
- World Luxury Spa Awards 2018 / Pürovel Spa & Sport Izmir "Luxury Hotel Spa Country Winner"
- World Luxury Hotel Awards 2013, 2014, 2017, 2018, 2019 / Best Management "Luxury Business Hotel"
- Safehotels 2018, 2019 / "Executive Level Certificate"
- Trip Advisor 2018 / "Certificate of Excellence"
- SKAL International 2017 / "Sustainable Tourism Award 2nd place"
- Safehotels 2017, 2018 / "Executive Level Certificate"
- World Luxury Hotel Awards 2015 / "Luxury Business Hotel in Turkey"
- Kalder-Turkish Society for Quality, Izmir Branch-16th Local Quality Awards 2015 / "Award of Merit"
- Republic of Turkey, Ministry of Culture and Tourism 2015 / "Green Star" Certificate
- Trip Advisor "Certificate of Excellence for 5 Years" and 2015 Trip Advisor "Hall Of Fame List"
- Trip Advisor 2013, 2014 / Travellers' Choice Winner "Top 25 Hotels in Turkey&Top 25 Luxury Hotels in Turkey" and 2015 / Travellers' Choice Winner "Top 25 Luxury Hotels in Turkey"
- IIP (Investors In People) 2014 / "Silver Certificate"
- Swissôtel Hotels&Resorts 2014 / "Hotel of the Year"
- Ace of Mice 2013 / "Aegean Region Best Meeting Hotel"
- Skalite Awards 2013 / "Best Chain Hotel in Turkey"
- Bureau Veritas 2013 / "Gold Green Hotel"



THANK YOU

#SWISSVITALITY  
#SWISSHOSPITALITY  
#SWISSOTELTASTE

SWISSOTEL BUYUK EFES, IZMIR