



ILICA HOTEL

SPA & THERMAL RESORT
ÇEŞME



FACT SHEET



Boyalık Plajı

Aqua Toy City

İlica Hotel

İlica Plajı



01 / LOCATION & GENERAL INFORMATION

Opening Date	1996
Recent Renovation	2021
Category	5*
Total Area	30.000 m ²
Address	Boyalık District 3447 Street No 2 Ilıca, 35930 Cesme / İzmir
Phone	+90 (232) 723 31 31
Fax	+90 (232) 723 34 84
Mail	rezervasyon@ilicahotel.com
Web Site	www.ilicahotel.com

İzmir Airport	90 km
İzmir City Center	75 km
The Nearest Center	Çeşme (4 km) - Alaçatı (5 km)
Transportation	Transfer
Beach Length and Location	300 meters private beach
Number of buildings	1 Main building (5 floors) 1 Garden building (2 floors)
Elevator	3 pieces
İnternet	Free Wi-Fi



02 / ROOMS / GENERAL INFORMATION

Total Room: 310						Number of beds: 632						
	Premium Room	Superior Room	Deluxe Room	Lodge Room	Family Room	Garden Sea Suite	Junior Suite	Corner Suite	Family Suite	Lodge Suite	Sea Suite	King Suite
Sea View	X	X	X	X		X	X			X	X	X
Garden View			X		X			X	X			
Pool View						X						
Disabled Room		X										

WELCOME AND FAREWELL

Parking Service	Offering water and cologne wipes to the car during the exit of our VIP guests
General Manager welcome letter in the rooms of all VIP guests	Umbrella service for our guests on rainy days
Escorting all VIP guests to the room	Proper arrangement in all areas for our disabled guests
Information service on everything you need by the reception for 24 hours	Priority table reservation service in the main restaurant for our disabled guests
Offering drinks for our guests and their children during check-in procedures	Convenient arrangement in all venues for our pregnant guests

02 / ROOMS / PREMIUM & SUPERIOR



	LOCATION	AREA	FEATURES
Premium (Partial Sea view)	Main Building	25 m2	Free Wifi, 32-inch LCD television, 24 hour room service and mini bar, shower, bathrobes, hair dryer, water heater and tea and coffee options, safety deposit box, central air conditioning, 1 king bed or 2 twin beds, guest 3 the maximum number of people.
Superior (Garden view)	Garden Building	25 m2	Free Wifi, 32-inch LCD television, 24 hour room service and mini bar, shower, bathrobes, hair dryer, water heater and tea and coffee options, safety deposit box, central air conditioning, 1 king bed or 2 twin beds, guest 3 the maximum number of people.

02 / ROOMS / DELUXE



	LOCATION	AREA	FEATURES
Deluxe (Partial sea view)	Main Building	28 m2	Complimentary wireless internet access, 40-inch LCD television, 24 hour room service and mini bar, shower, bathrobes, hair dryer, water heater and tea and coffee options, safety deposit box, central air conditioning, 1 king bed or 2 twin beds, guest 3 the maximum number of people.
Garden Deluxe (Partial sea view)	Garden Building	28 m2	Complimentary wireless internet access, 40-inch LCD television, 24 hour room service and mini bar, shower, bathrobes, hair dryer, water heater and tea and coffee options, safety deposit box, central air conditioning, 1 king bed or 2 twin beds, guest 3 the maximum number of people.

02 / ROOMS / LODGE & FAMILY



	LOCATION	AREA	FEATURES
Lodge Room (Partial sea view)	Garden Building	16 m2	Complimentary wireless internet access, 32-inch LCD television, 24 hour room service and mini bar, shower, bathrobes, hair dryer, water heater and tea and coffee options, safety deposit box, air conditioning, 2 double bed, 2 guest maximum number of persons.
Family Room (Garden view)	Main Building	30 m2 Duplex	Complimentary wireless internet access, 32-inch LCD television, 24 hour room service and mini bar, shower, bathrobes, hair dryer, water heater and tea and coffee options, safety deposit box, central air conditioning, 1 king bed, 1 sofa bed, guest 4 the maximum number of persons.

02 / ROOMS / SUITES



LOCATION		AREA	FEATURES
Garden Sea Suite (Sea and pool view)	Garden Building	45 m2	Complimentary wireless internet access, 32-inch LCD television, 24 hour room service and mini bar, shower, bathrobes, hair dryer, water heater and tea and coffee options, safety deposit box, central air conditioning, 1 king bed, guest 3 the maximum number of people.

02 / ROOMS / SUITES



	LOCATION	AREA	FEATURES
Junior Suite (Partial sea view)	Main Building	60 m2	Complimentary wireless internet access, 40-inch LCD television, 24 hour room service and mini bar, shower, bathrobes, hair dryer, water heater and tea and coffee options, safety deposit box, central air conditioning, 1 bedroom with king-size bed, 1 Living Room, 4 guest maximum number of persons.
Corner Suite (Garden view)	Main Building	45 m2	Complimentary wireless internet access, 40-inch LCD television, 24 hour room service and mini bar, shower, bathrobes, hair dryer, water heater and tea and coffee options, safety deposit box, central air conditioning, 1 bedroom with king-size bed, 1 Living Room, 4 guest maximum number of persons.

02 / ROOMS / SUITES



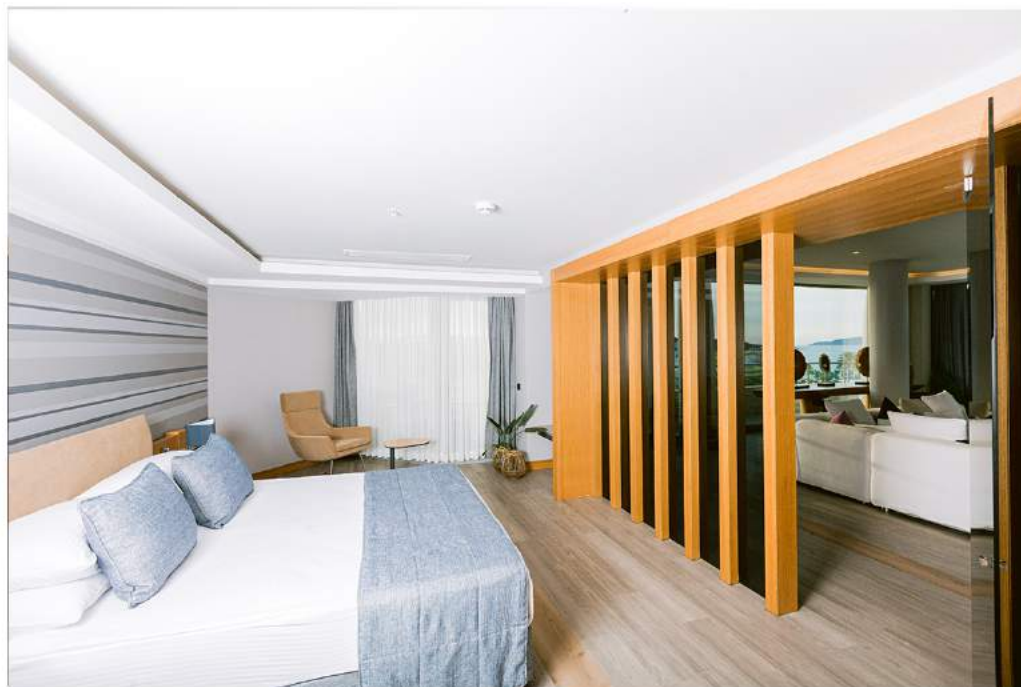
	LOCATION	AREA	FEATURES
Family Suite (Garden view)	Main Building	60 m2 Dublex	Complimentary wireless internet access, 32-inch LCD television, 24 hour room service and mini bar, shower, bathrobes, hair dryer, water heater and tea and coffee options, safety deposit box, central air conditioning, 1 king bed, 1 single bed, the maximum number of guest is 6 persons.
Lodge Suite (Sea view)	Garden Building	16 m2	Complimentary wireless internet access, 32-inch LCD television, 24 hour room service and mini bar, shower, bathrobes, hair dryer, water heater and tea and coffee options, safety deposit box, central air conditioning, 1 king circle bed, 2 guest maximum number of persons.

02 / ROOMS / SUITES



	LOCATION	AREA	FEATURES
Sea Suite (Sea view)	Main Building	65 m2	Complimentary wireless internet access, 40-inch LCD television, 24 hour room service and mini bar, shower, bathrobes, hair dryer, water heater and tea and coffee options, safety deposit box, central air conditioning, 1 bedroom with king-size bed, 1 Living Room, 4 guest maximum number of persons.

02 / ROOMS / KING SUITE



	LOCATION	AREA	FEATURES
King Suite (Sea view)	Main Building	70 m2	Complimentary wireless internet access, 40-inch LCD television, 24 hour room service and mini bar, shower, bathrobes, hair dryer, water heater and tea and coffee options, safety deposit box, central air conditioning, 1 bedroom with king-size bed, 1 Living Room, 4 guest maximum number of persons.



03 / FOOD & BEVERAGE

BEVERAGE CONCEPT

Hot Drinks	Non-Alcoholic Drinks	Aperatif	Imported Liquor	Local Liquor	Beers
Gren Tea	Water	Raki	Archer's	Bitter Almonds	Efes Pilsen <small>Unpasteurized</small>
Tea	Mineral Water	Double Raki	Kahlua	Banana	Efes Red Ale
Turkish Coffee	Fruit Mineral Water	Tekirdağ Raki	Malibu	Mint	Efes White Ale
Turkish Coffee with mastic drops	Buttermilk	Double Tekirdağ Raki	Safari		Efes Pilsen Barrel
Nescafe	Lemonade	Vodka (Local)			Efes Pilsen <small>Special Series</small>
Filter Coffee	Coca-Cola	Gin (Local)			Efes Pilsen
Hot Chocolate	Coca-Cola Light	Campari			Efes Malt
Espresso	Coca-Cola Zero	Martini Dry			Bomonti
Machiato	Fanta	Martini Bianco			Bomonti Unfiltered
Cappuccino	Sprite	Martini Rosso			Bomonti Red Ale
Americano	Fuse Tea				Miller
Latte	Fruit Juice				Beck's
Mocha	Schweppes Tonic				Erdinger
	Orange Juice				Grolsch
	Energy Drink				Duvel
Wine					
Red Wine			White Wine		
Sevilen Majestik Syrah & Kalecik Karası			Sevilen Majestik Sauvignon Blanc & Sultaniye		
Sevilen Güney Boğazkere & Öküzgözü			Sevilen İsabey Sauvignon Blanc		
Sevilen Magnesia Syrah			Sevilen Magnesia Semillion & Chardonnay		
Sevilen R Red Cabernet Frnac & Merlot & P.V.			Sevilen W Semilion & Sauvignon Blanc		

03 / FOOD & BEVERAGE

L O B B Y B A R

Our Lobby Bar, where all cold and hot drinks prepared according to your desire, snacks, desserts and main dishes suitable for your taste are offered, is open to your service all day.

Room service is available 24 hours a day.





03 / FOOD & BEVERAGE

GRILL BAR

While experiencing delicious food alternatives from each other in the Grill Bar, the refreshing smell of iodine accompanies you. After the meal, you will melt the most enjoyable minutes of the day in your cocktail glasses, where you will live in the famous "Grill Bar" until later in the day.

Opening - Closing

09:00 - 23:00

Service Hours

10:00 - 18:00

Grill bar is open during the summer season.





03 / FOOD & BEVERAGE

KALAMA RESTAURANT

You can enjoy your holiday with our unique delicious dishes that we offer from various World Cuisines in our Kalama Restaurant with its magnificent view.

Breakfast Buffet
(Weekdays - Saturdays)

07:30 - 10:30

Breakfast Buffet
(Sunday)

08:00 - 11:00

Dinner

19:30 - 21:30 Yaz
19:00 - 21:00 Kış



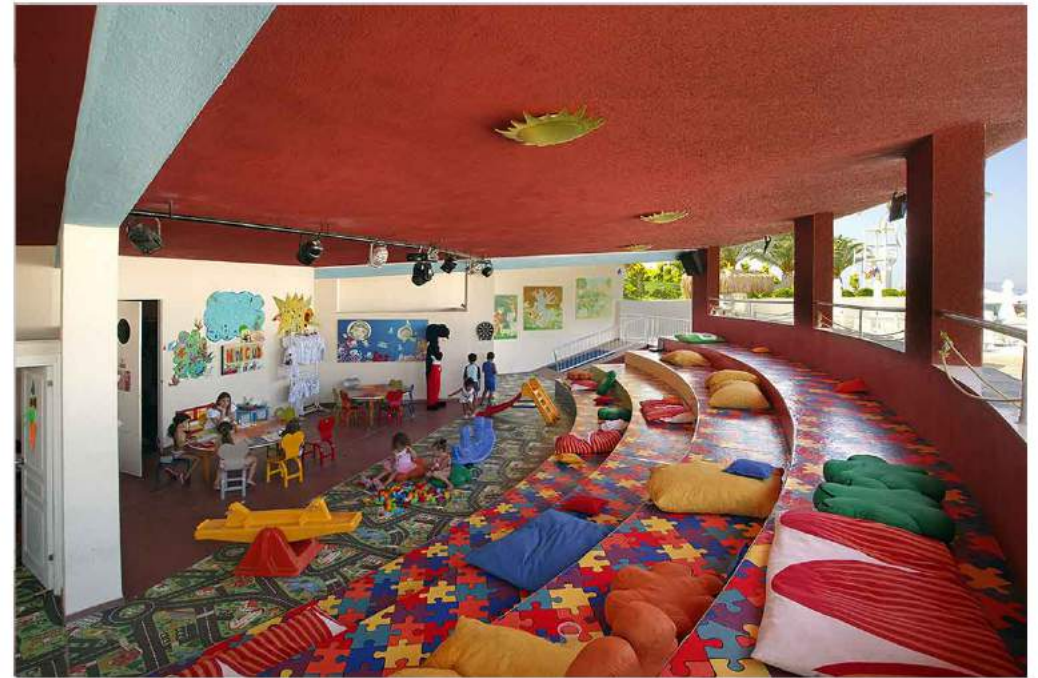


04 / ENTERTAINMENT AND ACTIVITIES



Live Music

On summer evenings, enjoy the entertainment with our live music event Decongesting your ears at Lobby Terrace between 21:00 - 23:00 with guitar accompaniment.



Mini Club

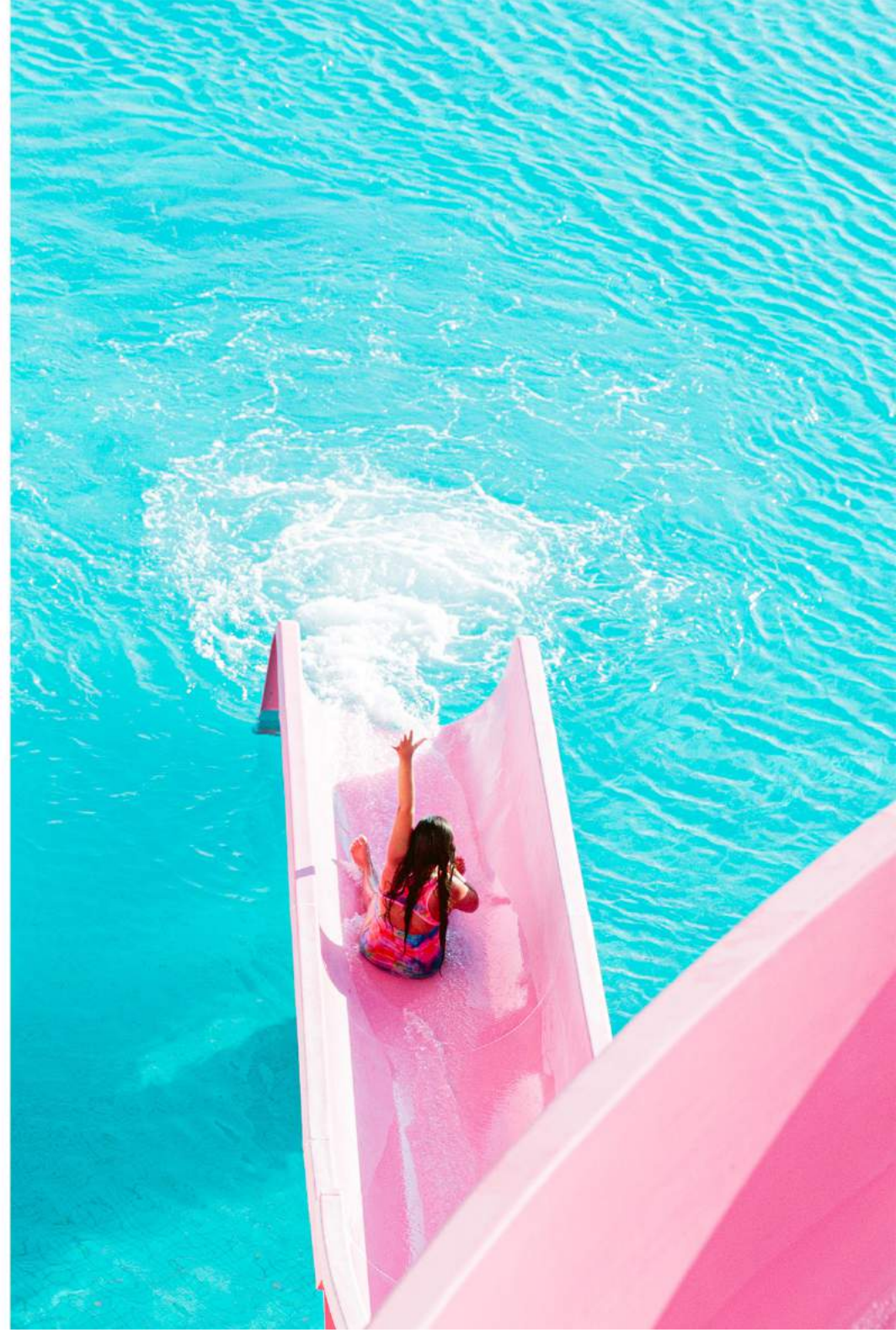
The most basic purpose of our children's club is not to take away the smile from our children's faces. We color the holidays of our little guests with activities that improve their games and skills and teach environmental awareness and love of nature, which will be important throughout their lives. Enjoy your holiday while taking care of your children closely with our experienced and trained staff.



Aqua Toy City


Aqua Toy City, built on an area of 13 acres, is indispensable for the youngest guests with water games with fountains, water shows with lights and music, slides and giant water toys designed with high safety sensitivity.

Thursday Mondays and Thursdays are free of charge and other days are 50% off for hotel guests during the Aqua Toy City 2021 season.





06 / POOLS



	Area	Heating	Water Properties	Depth	m2	Fee
Outdoor Pool	Garden (Main Pool)		Fresh Water	1.40 cm	625 m2	Free
Thalasso Pool	SPA	X	Sea Water	1.40 cm	160 m2	Free
Outdoor Sea Water Pool	Garden		Sea Water	1.60 cm	100 m2	Free
Outdoor Thermal Pool	Garden	X	Thermal Water	1.10 cm	20 m2	Free
Indoor Thermal Pool	SPA	X	Thermal Water	1.15 cm	250 m2	Free
Indoor Aqua Park	SPA		Fresh Water	0.40 cm	220 m2	Free



07 / SPA ILICA

you will be able to relax both your body and your soul in our SPA & THERMAL center, which serves on an area of 3500 m2. Thanks to our expert, experienced and closely related team in their branches, you will get away from all the stressful moments of life and experience the exotic SPA pleasure of the Far East with personalized treatments. In our personal care and massage rooms, we promise health and beauty by solving all kinds of problems from anti-stress to cellulite, local pains to skin problems with our programs specially prepared for you.

Massages (Paid)		
Aroma Therapy Massage	Anti Stress Massager	Regional Massages
Thai Massage	Four Hand Massager	Indian Head Massage
Balinese Massage	Lomi Lomi Massager	Anti Cellulite Massage
Hot Stone Massage	Reflexology	Scrub-Foam Massage

Care (Paid)	
Body Care	Skin Care
Mud Care	Classic Skin Care
Sea Salt Peeling	Special Cit Care
Seaweed Care	Anti-Age Skin Care

The use of the Relaxation Area, Sauna, Hammam, Thalasso Pool, Thermal Pool and Indoor Mini Aqua Park is free of charge.

Fitness Center (Free)

To stay fit and healthy during your holiday, you can take advantage of the Ilica Fitness Center, which is equipped with modern technology equipment.

08 / WEDDING & INVITATION



MY BEACH WEDDING AREA

All your dreams will come true in the My Beach wedding area, which can host your invitations from 150 people to 400 people and is located right in the middle of the sea with the pool.

MYBEACH, which has become the sought-after venue of Çeşme for all special occasions such as wedding, engagement, cocktail, cocktail prolonge, "after party" held after the wedding, wedding ceremony, 13th birthday celebration / Bat Mitzvah, bachelorette party in summer, hundreds of organizations are carried out with 100% satisfaction.



KASARA GALA HALL

Our Kasara Hall is 876 square meters and serves 790 people in the gala layout and 900 people in the cocktail layout.

In our Kasara Gala Hall, which has been designed modern and inviting and where every detail has been prepared with consideration for your needs, we make your organizations unforgettable in the winter months as well.



09 / MEETINGS & EVENTS

CONVENTION HALL

Hall	Area (m2)	SxWxH	Theater	Class	U	Premiere	Cocktail
Kasara 1	432	18,02 x 23,97 x 4,87	400	225	-	400	411
Kasara 2	371	15,47 x 23,97 x 4,87	350	195	-	350	353
Kasara	876	36,56 x 23,97 x 4,87	850	550	-	790	900
Gapya	38	5,40 x 7,11 x 2,36	25	15	15	19	37
Gomina	69	7,82 x 7,59 x 2,36	VIP 11	VIP 11	VIP 11	VIP 11	VIP 11
Karina	167	16,57 x 10,06 x 2,37	150	70	40	83	159
Bianca	74	12,17 x 6,07 x 2,34	85	25	25	37	70
Borda	70	13,17 x 5,35 x 2,46	85	30	28	35	67
Velena	87	6,56 x 13,25 x 2,25	VIP 18	VIP 18	VIP 18	VIP 18	VIP 18
Lorma	37	5,51 x 6,66 x 2,19	20	10	15	18	35
Liga	57	7,92 x 7,21 x 2,20	25	25	20	29	54
Alabanda	144	8,53 x 16,83 x 2,16	100	60	40	72	137
Arma	79	9,36 x 8,46 x 2,18	35	25	30	40	75
Papalia	68	6,06 x 11,15 x 2,13	35	25	30	34	64
Elinda	95	5,96 x 15,97 x 2,18	40	40	35	48	91
Patalya	70	8,35 x 8,39 x 2,20	50	35	25	35	67
Foyer (-2)	960	32 x 30 x 5,52	-	-	-	-	750
Foyer (-1)	0	- x 30,88 x 2,18	-	-	-	-	-
Foyer (Outdoor)	205		-	-	-	-	150

09 / MEETINGS & EVENTS / KASARA-I-II



	AREA (m2)	S x W x H (m)	THEATER	CLASS	PREMIERE	COCKTAIL
Kasara	876	36,56 x 23,97 x 4,87	850	550	790	900
Kasara 1	432	18,02 x 23,97 x 4,87	400	225	400	411
Kasara 2	371	15,47 x 23,97 x 4,87	350	195	350	353

09 / MEETINGS & EVENTS / FOYER



	AREA (m2)	S x W x H (m)	THEATER	CLASS	PREMIERE	COCKTAIL
FOYER	920	32 x 30 x 5,52	-	-	-	750
OUTDOOR FOYER	205	- x 30,88 x 2,18	-	-	-	150

09 / MEETINGS & EVENTS / GAPYA & GOMINA



	AREA (m2)	S x W x H (m)	THEATER	CLASS	U	PREMIERE	COCKTAIL
Gopya	38	5,40 x 7,11 x 2,36	25	15	15	19	37
Gomina	59	7,82 x 7,59 x 2,36	VIP 11				

09 / MEETINGS & EVENTS / KARINA



	AREA (m2)	S x W x H (m)	THEATER	CLASS	U	PREMIERE	COCKTAIL
Karina	167	16,57 x 10,06 x 2,37	75	70	40	83	159

09 / MEETINGS & EVENTS / BIANCA & BORDA



	AREA (m2)	S x W x H (m)	THEATER	CLASS	U	PREMIERE	COCKTAIL
Bianca	74	12,17 x 6,07 x 2,34	60	25	25	37	70
Borda	70	13,17 x 5,35 x 2,46	60	30	28	35	67

09 / MEETINGS & EVENTS / VELENA & ALESTA



	AREA (m2)	S x W x H (m)	
Velea	87	6,56 x 13,25 x 2,25	VIP 18 pax
Alesta	87	5 x 12,25 x 2,25	VIP 18 pax

09 / MEETINGS & EVENTS / LORMA & LIGA



	AREA (m2)	S x W x H (m)	THEATER	CLASS	U	PREMIERE	COCKTAIL
Lorma	37	5,51 x 6,66 x 2,19	20	10	15	18	35
Liga	70	7,92 x 7,21 x 2,20	25	25	20	29	54

09 / MEETINGS & EVENTS / ALABANDA



	AREA (m2)	S x W x H (m)	THEATER	CLASS	U	PREMIERE	COCKTAIL
Alabanda	144	8,53 x 16,83 x 2,16	75	60	40	72	137

09 / MEETINGS & EVENTS / ARMA & PAPALIA



	AREA (m2)	S x W x H (m)	THEATER	CLASS	U	PREMIERE	COCKTAIL
Arma	79	9,36 x 8,46 x 2,18	35	25	30	40	75
Papalia	68	6,06 x 11,15 x 2,20	35	25	30	34	64

09 / MEETINGS & EVENTS / ELINDA & PATALYA



	AREA (m2)	S x W x H (m)	THEATER	CLASS	U	PREMIERE	COCKTAIL
Elinda	95	5,96 x 15,97 x 2,18	40	40	35	48	91
Patalya	70	8,35 x 8,39 x 2,20	50	35	25	35	67

10 / CATERING



We want to be with you on your "most important" days with our 5-star product and service quality.

We offer the service that you will draw the boundaries of at a picnic and in the open field, by the pool, at your workplace, in the garden of your home.

SERVICES

Opening Cocktails
Product Launches
Company Celebrations
Anniversaries

Wedding and Engagement Organization
Birthday Organization
Christmas Party
Henna Night

Bachelor Party
Picnic Organization
Iftar Organization
Bar Mitzvah

11 / GENERAL SERVICES



FREE SERVICES

Door Reception Service

Message Service

Baggage Handling Officers

Parking Service

Mobile Phone Charging Unit in the Lobby

Shoelace Cleaning Unit

For Disabled Guests, a wheelchair (Accompaniment is Required.)



PAID SERVICES

Phone, Fax, Copier

Laundry (Dry cleaning, washing, ironing and tailor service)

Shopping Center (Shops)

Electronic Equipment Presented at the Congress Center

Transfer Services

Car Rental

12 / ÖNEMLİ BİLGİLER



Shaping a World of Trust



GÜVENLİ TURİZM SERTİFİKASI

Türkiye Turizm Tanıtım ve Geliştirme Ajansı tarafından önerilen bu sertifika, BV Inspektorate Uluslararası Gözetim Servisleri A.Ş. tarafından düzenlenmiştir.

BV Inspektorate Uluslararası Gözetim Servisleri A.Ş., TÜRKAK tarafından akredite edilmiş olup, akreditasyon kapsamları www.turkak.org.tr adresinde yayınlanmaktadır.

ILICA SPA & WELLNESS THERMAL RESORT

Güvenli Turizm Sertifikasyon Programı çerçevesinde yayımlanan
"Konaklama Tesisleri ve Tesisler Bünyesinde Yer Alan Yeme & İçme Ünitelerinde
Pandemi Süresince Uygulanacak COVID-19 ve Hijyen Uygulamaları
Değerlendirme Kriterleri" kapsamında istenen koşulları yerine getirdiği için
"Güvenli Turizm Sertifikası" almaya hak kazanmıştır.

Sertifika Numarası
BVI-TR-0217

Düzenleme Tarihi 09 / 07 / 2020

Geçerlilik Tarihi 09 / 08 / 2020

Kuruluş Türü
Konaklama İşletmesi

İmza
İBRAHİM TAGAY
Belgelendirme Müdürü



T.C. Within the scope of the "Safe Tourism Certification Program" initiated by the Ministry of Culture and Tourism, we became the first Resort Hotel in Izmir to receive a certificate and the first hotel in Cesme to receive a certificate. T.C. Ilica Hotel SPA & Thermal Resort, which is supervised by Bureau Veritas approved by the Ministry of Culture and Tourism, has been entitled to receive a "Safe Tourism Certificate" for fulfilling the applications included in this scope. (The image and dates on the side are representative.)

ISO 9001:2008 Quality Management System

ISO 10002:2014 Customer Satisfaction Management System

ISO 14001:2004 Environmental Management System

To get information about the protection of personal data
www.ilicahotel.com/kvkk you can visit his page.

In all Food and Service offerings, officially certified first-class quality products and brands are used.

Guests who are allergic to any food are required to inform the Guest Relations of their condition upon arrival at the property. Otherwise, the Hotel Management is not responsible for any problems that may occur.

According to the law on the use of tobacco and tobacco products No. 4207, hookah and electronic cigarettes cannot be smoked in closed areas.

Pets are not accepted in our facility.

The check-in time is 15:00 and the check-out time is 11:00.

The working degrees of the air conditioner are automatically adjusted by the automation system according to the outdoor weather conditions in order to provide maximum comfort.

Alcoholic beverages, tobacco products and liquor sales are not allowed for guests under the age of 18.

Alcohol is not served to our guests who have a health risk.

The preparatory works carried out during the opening and closing of the season may be postponed due to weather opposition.

The hotel management reserves the right to unilaterally make changes to all service hours and types contained in the Fact Sheet in conditions that may occur due to weather conditions and similar reasons that are not available.

The days on which restaurants and bars will be closed may vary depending on the weather conditions and booking requests made by the hotel management.

Removing food from food units to the outside is not appropriate in terms of hygiene and safety.

Fishing is prohibited within the swimming limits.

Motorized watercraft cannot be used within the swimming limits.

The hotel management reserves the right to make unilateral changes to the services and information contained in this guide.

Our current concept is always published on our ILICA HOTEL website.

The Tour Operator and the Agencies agree that these concepts, which are currently being published, are valid within the scope of the contracts and that they will update this information simultaneously in their sales and marketing channels.

You can follow us on our social media accounts. Our Instagram, facebook and twitter username is @ilicahotel

13 / DISCOVER



It is a unique feeling to visit Alaçatı among its stone houses smelling of history, accompanied by its Decadent texture.

While you are vacationing among Decked-out houses, warm weather and warm people, it will surely cross your mind to tour the square it houses.

While walking around Alaçatı Square, you feel the need to rest somewhere. At that moment, a small but very cozy cafe and tea gardens located around the square will invite you. Living the atmosphere of Alaçatı is an experience.



WINDMILLS (5KM) Alaçatı Windmills, which have become the symbol of Alaçatı with their 150-year long history, are now visited by domestic and foreign tourists for tourism purposes.

Alaçatı Windmills, which are used to grind wheat in a place with plenty of wind like Alaçatı, greet us right at the entrance of Alaçatı. A part of the Alaçatı Windmills, which was restored under the protection of Çeşme Municipality, is serving as a restaurant and cafe today.

The Alaçatı Windmills, which are built on a small hill of four different sizes, immediately stand out as stone structures dating from the 1850s.



CESME CASTLE (5 KM) was built in 1508 by the Ottoman Sultans II.Çeşme Castle, which was built by Aydın Governor Mir Haydar to Architect Ahmet oğlu Mehmet during the Beyazıt period, is one of the most important symbols of Çeşme. In some sources, the castle, which is also used as a museum today, is the 14th. there is information that it was built by the Genoese in the XVII century, but the accuracy of this information has not yet been proven. Çeşme Castle, which was located on the seashore during the years it was built, has taken its current position with the filling of the sea over time.

We can say that Çeşme Castle, which also contains the Çeşme Archaeological Museum today, has a great historical importance. The Çeşme Archaeological Museum usually exhibits artifacts unearthed from the Ancient City of Erythrai, Çeşme Center, Alaçatı and Kalemburnu regions.



ILDIRI ERYTHRAI ANCIENT CITY (19KM) is located in Ildırı Village of Çeşme. Erythrai, one of the leading states of the twelve Ionian States in ancient times, is just one of the important settlements of the Ancient Aegean world.

Like many regions of our country, Ildırı resort of Çeşme is a very rich region in terms of historical ruins. The Ancient City of Erythrai, which was uncovered during archaeological excavations, is embedded in the entire fabric of Ildırı. The ancient theater, city walls, temple ruins and mosaics that have survived from the ancient city to the present day are spread throughout the region. Even so that; you can see that these mosaic stones are used in many houses. Especially when you go to the hills of Ildırı, you can watch the ruins of the ancient city with a magnificent view.



HOLE COVE (15KM) When you look at the Holi Bay view from the hill that dominates the bay, there is a magnificent blueness and enjoyment as much as possible. In order to understand where the name Alaçatı Holed Sheep comes from, it is necessary to go down to the beach, to the seashore and take a closer look at the rock shapes.

The rocks eroded by the rough waves over the years have been the biggest help of the impressive landscape. The hole in the rock located in the middle of the sea and at the point where the coast and the sea are integrated is the source of the name of this bay. This rock also divides two different bays exactly in the middle.



DALYANKÖY GUM COVE (8 KM) Fountain; riches extending deep into history on one side, healing hot waters, blue and white stone buildings and cobbled streets on the other side famous nightclubs, entertainment programs that last until the morning in beach clubs... Çeşme leaves a unique taste on the palate of its visitors of all ages and all tastes with its wide range. If you are looking for a quiet bay where you can swim in Çeşme in addition to the dozens of bays and beaches it hosts, Sakızlı Bay may be for you. Only 4 km from the center of Chios Cesme. it is located at a distance of. Here you can swim in the sea with clear and still water, enjoy the sun on the sandy beach and get a tan. There are also restaurants with fresh, delicious fish and seafood in Sakızlı Koy, which is located within the borders of Dalyanköy.



0232 723 31 31 | rezervasyon@ilicahotel.com | www.ilicahotel.com
Altinyunus Mahallesi Boyalık Mevkii 3447 Sk No:2 Ilıca/Çeşme/İZMİR